



WISMA LEGALKU

PT ABHIRAMA UPEKSHA SANTHOSA



Company Profile

***A Home for
Everyone***

wismalegalku.com



CEO **Statement**



I always dream of a Company which can do business comfortably like a home. Company to its squads; to its partners; and to its clients. This is how Wisma Legalku was firstly established. Started with a fun relationship with its squads, exchanging experiences each other, until providing and offering best services to the Clients. It is designed not only to assist your business and legal needs, but also to build a relation, a family, which will always remain deliberate and longlast.

Resha Roshana Putri, S.H

CEO of Company

Table of Contents



- 1** Why We Are Here
- 3** Vision & Mission
- 4** Our Core Values
- 5** Logo Philosophy
- 6** Our Services
- 8** Clients and Partners
- 9** Our Squads
- 11** Our Contact





About Company

In this modern era, many business entities are competing to provide consulting services to assist various business actors in dealing with their business needs and issues, especially in the fields of law, taxes, and licensing. Wisma Legalku is a company whose mission is not only to provide consulting services on business and legal issues, but also to build a comfortable home for all business actors.

The existence of the Job Creation Law is one of the gongs that sounds to indicate ease of doing business and ease of business licensing implemented by the Indonesian government. The aim of Wisma Legalku as a home is to provide this convenience to all business actors. By combining the company's vision, mission and values, Wisma Legalku is always there to help business actors to find it easy to do business and remain in compliance with business regulations in accordance with applicable laws and regulations.

“Why should we choose you over the others?” This question always comes up by most of clients when they need consultants to provide their legal needs. We do understand as legal service providers are numerous and most of them are great at providing services.

On paper, we are a full-service consultant for Client’s legal needs in various sectors and background. But we also offer so much more than that anyhow. We value every relationship we have with our clients and combine it with our expertise, at the very heart of our services.

Our squads uphold personal values as what we show as our corporate values. They are consisted of not only various expertise and specialist, but also come from various backgrounds and stories. They will match your legal and business needs from their experiences in handling service and needs.

Our purpose is clear, shown by our vision, mission, and values: we want to be a comfortable and restful home to our clients. We do understand that sometimes legal and business needs and deals are inevitably serious and nerve-wracking, therefore we would like to always provide a home to give creative solutions and advice which helps our client to fulfil your needs and goals.

Wisma Legalku intends to be the advisors who help you drive forward, deliberate solutions to your legal and business needs and/or issues, grow your business in a comfortable way, and connect with you, not in a partner-client way, but as a family, in one restful home.



Vision & Mission



■ Vision

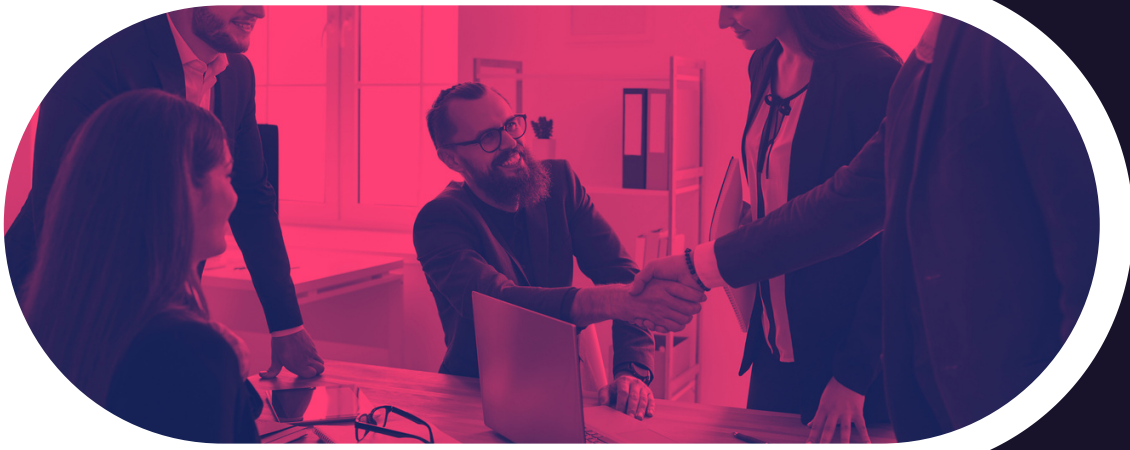
Our vision is “A home for everyone’s legal and business needs”.

We aspire to make Wisma Legalku the most comfortable home. Wisma Legalku intends to be a home to talk in regards with legal and business needs and issues comfortably, until business actors get their best solutions

■ Mission

- *Take part of “ease of doing business in Indonesia”.*
- *Reunite our squads with the clients as a family, providing legal and business services for clients’ needs.*
- *Participate in public education in order to increase public legal awareness.*
- *Actively assist clients with legal and business problems until they get the best solution.*





Our Core Values

Our core value is READY, which consists of:



1. Relationship

We do respect our relationship with our clients from various sectors and backgrounds. We strive to build strong relationship with any business sectors to enhance our experiences in handling various issues and needs.



2. Earnest

When we discuss clients' issues at home, we strive to do it earnestly. We expect our service will be an earnest of the clients' desire to solve their legal and business issues.



3. Active

When it comes to giving legal and business needs and solving issues, we will be actively doing it in accordance with prevailing law and regulations. We will research to the experts and authorized stake holders in helping our clients.



4. Deliberate

We put first deliberation over haste in handling clients' need and issues. The intention is clear. We expect to give the best solutions for all issues.



5. Youthful

Putting first youthful values doesn't mean we are not experienced. Youthful means energetic and vibrant. We provide our squads with energetic and vibrant vibes and services to match your legal and business needs.



Logo Philosophy



A Home

According to KBBI, "Wisma" is a building for residence, a collection of houses. Why we make Wisma Legalku as a home? Because home is the best place to come, ensconce, and tell stories.



Scales

Scale is identical with laws. Scales is a symbol of justice, which is obtained through a balance between letter and feeling. Therefore, services of Wisma Legalku is the combination with laws and relationship, to get best solutions for the clients.

Red Dominant Color

Red is a primary color, which symbolizes courage, passion, activity, love, and strength. Red is also identical with laws. By putting red as our dominant colors, we expect to give our service actively and passionately, combined with our courage and strength to give the best to our clients.

Our Services



BUSINESS AND CORPORATE

Our service in business consists of:

1. Company Establishment
 - a. PT;
 - b. CV;
 - c. Individual PT (PTO);
 - d. Firm;
 - e. Others.
2. Contract Drafting
 - a. MoU;
 - b. NDA;
 - c. SHA;
 - d. Lease/Purchase Agreement;
 - e. CSPA and SPA;
 - f. Others.
3. Notarial Arrangement
 - a. Marital Arrangement;
 - b. Separation Divorce Arrangement;
 - c. Inheritance;
 - d. Land and Building Transaction;
 - e. Grant;
 - f. Others.
4. Merger and Acquisition
 - a. Legal due diligence;
 - b. Reporting;
 - c. Closing.



COMPLIANCE

Our service in compliance consists of:

1. License and permit
 - a. Intellectual Property Rights ;
 - b. NIB;
 - c. SBUJK;
 - d. SBUJPTL;
 - e. Standard Certificates;
 - f. Operational Permit and License;
 - g. Others.
2. Reports
 - a. LKPM Reports;
 - b. SIINAS Reports;
 - c. KPPU Reports;
 - d. Tax Consultancy and Report;
 - e. VAT Reports;
 - f. WHT Reports;
 - g. Tax assistance subscription.



Our Services

LITIGATION

Our service in litigation consists of:

1. Litigation in Civil Case;
2. Litigation in Criminal Case;
3. Litigation in Industrial Relation Case
4. Litigation in Administrative Court (PTUN)

LEGAL EDUCATION AND WORKSHOP

Our service in legal education and workshop consists of:

1. Legal education;
2. "What do you have to know"
3. Legal Trifia;
4. Legal Seminars and Workshops.

Our Clients



Our Partners

We maintain relationship professionally with enormous lawfirm, notaries, and consultants in order to collaborative for our Client's satisfaction to fulfill their legal and business needs.





Our Squads

Our squads consist of young and energetic team which are always ready to assist!

Dino Panji, S.H.

Founder

Dino is a Lawyer and has a Peradi license, a Bachelor Degree from the Padjadjaran Faculty of Law, specializing in Agreement transactions and Compliance in the Field of Construction Services, Telecommunications Infrastructure and Electricity. Has a license as a Junior Business Entity Assessor for the Ministry of Energy and Mineral Resources.



Resha is your one-stop advisor for your business issues, specializing at business law, contract law, construction law, and compliance. She is keen at drafting and negotiating. As a Lawyer, she is experienced in drafting various contracts, assisting clients in fulfilling their compliance needs in accordance with their business sectors.

Resha Roshana, S.H.

Founder



Our Squads

Our squads consist of young and energetic team which are always ready to assist!

Rizqia Putra, S.H.

Senior Associate

Rizqia is a Lawyer/Advocate who is experienced in the fields of Merger & Acquisition, Investment, Construction, and Intellectual Property. Furthermore, Rizqia has assisted clients in hotel acquisition transactions in Indonesia and Malaysia by hotel management companies from Japan, cooperation in the use of Quantity Assurance methods by several state-owned oil and gas sector companies, representing the United States in the pangasius fish dumping dispute between the US vs Vietnam.



Nadita is a Notary, a Bachelor graduate from the Faculty of Law, Trisakti University and Master of Notary at the University of Indonesia. She has a specialty in the field of notary, especially asset transactions in the form of land and buildings.


Nadita Arfiandi, S.H.

Senior Associate

Thank You!



Our Contact:

 +62821-2957-3287

 @wismalegalku

 upeksha@wismalegalku.com

 wismalegalku.com

 *The Mansion Fontana
Tower, Jl. Trembesi, Kel.
Pademangan Timur,
Jakarta Utara*